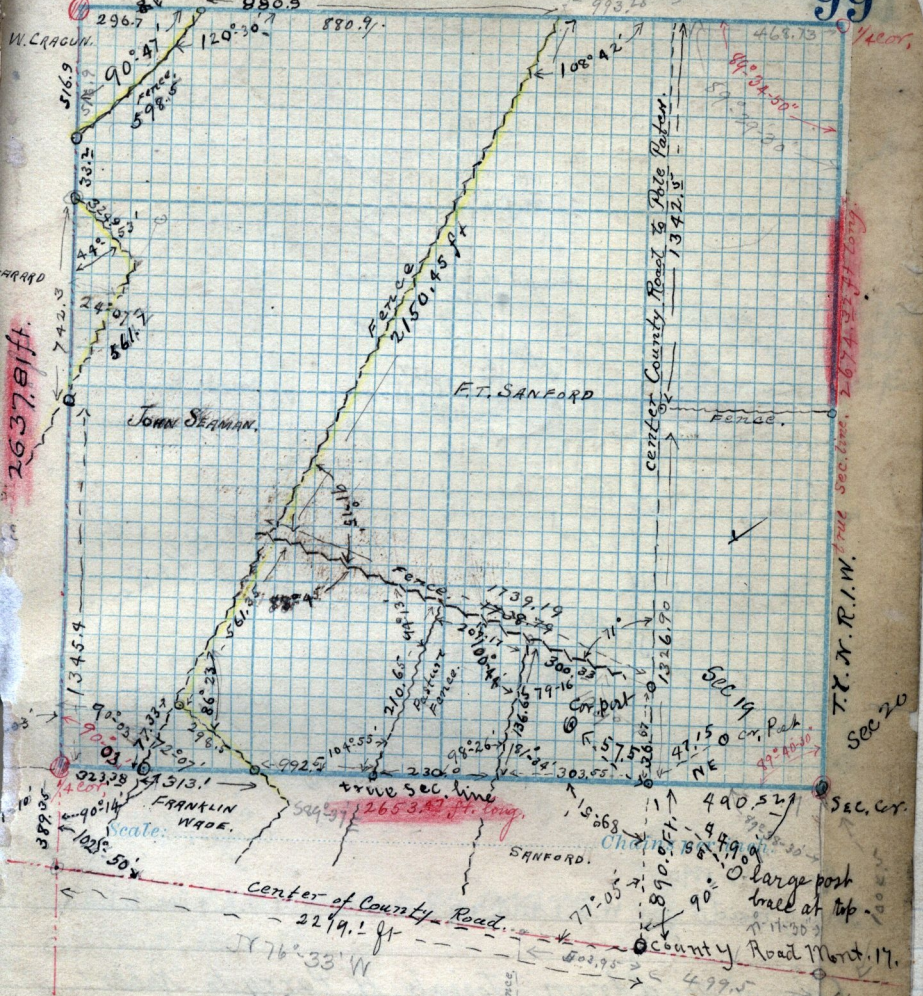


center Sec. 19 T-7-N-R-1-W



April 14th 1889 - Running North on a true line through Sec 19 - T-7-N-R-1-W
 Bsq. at 1/4 cor. N 2613.2 intersecting random line from West at 2681.2 from that
 line said Sec. N.E. angle bring $89^{\circ}44'30''$, 2637.81 ft intersecting true 1/4 Sec line
 from West with N.E. angle $89^{\circ}13'$
 Run S. along true E. line of S.E. 1/4 Sec 19 - T-7-N-R-1-W.
 Ap. 9th 1890. 1450. fence E. + W. 2126. small irrigation ditch N. by N.W.
 2641.5 fence E + W. 2674.32 - S.E. cor. Sec 19; small stake in Ellis alfalfa field